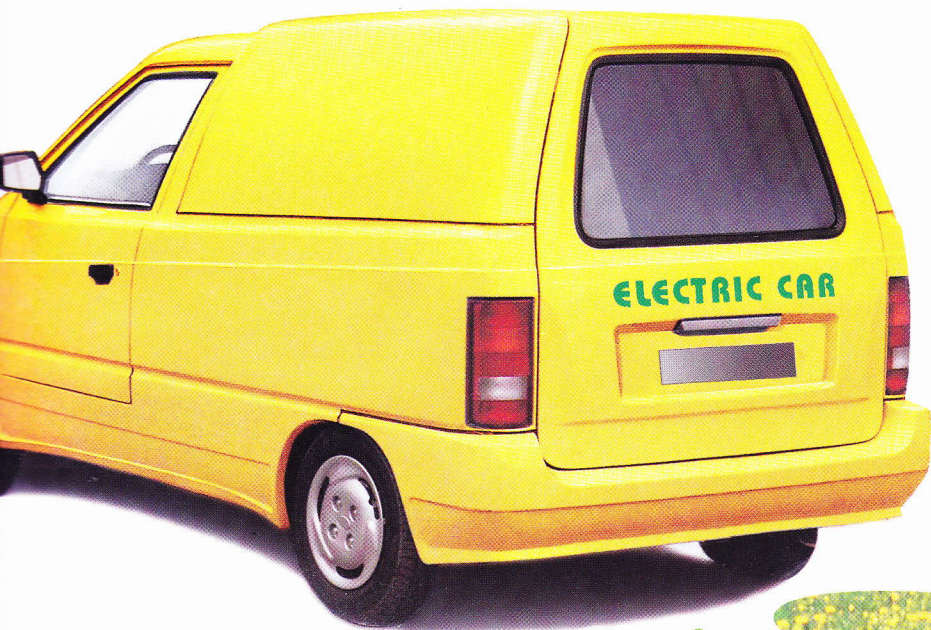




	ŠKODA EL CAR
	ELECTRIC VEHICLE
	BETA



BETA

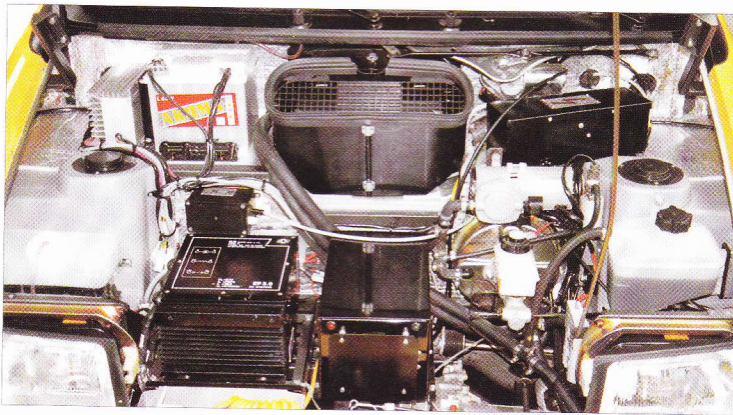
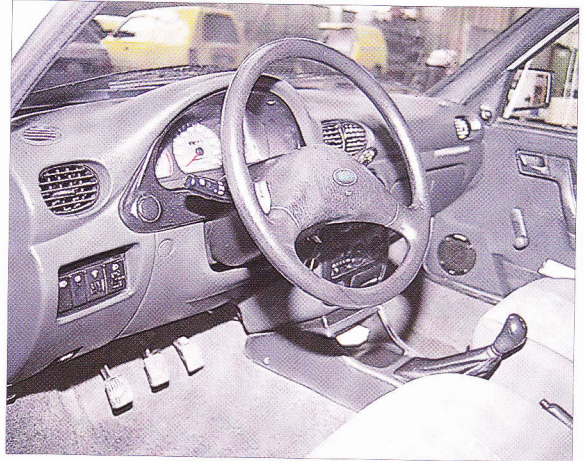
**IS AN ELECTRIC
VEHICLE UP-TO-DATE
CONCEPTION WITH A SHAPE
WHICH CORRESPONDS WITH INGOING
WORLD TRENDS. IT DOES NOT CORRODE
AND IT'S EASY TO REPAIR. IT'S ALSO
SAFE AND HAS A HIGH
LOAD-CARRYING
CAPACITY**

ECOLOGY
SAFETY
TO ASSISTANCE
TO CORROSION

It's a two-seated van having the front wheel drive and a large loading compartment. It's suitable for transporting of EURO dimensional pallets. It's possible to install either an electric drive or internal combustion engine or, in the future, hybrid drive



VAN INTERIOR

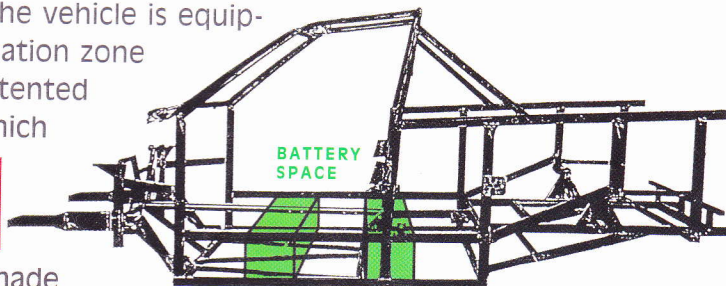


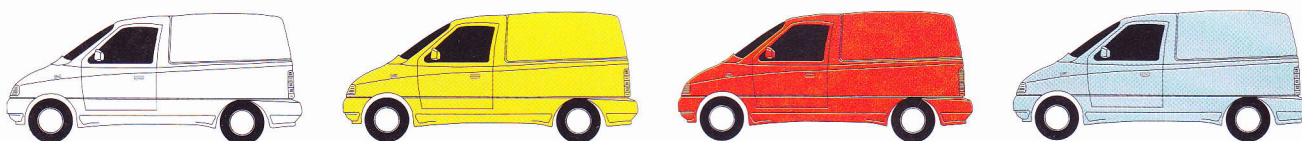
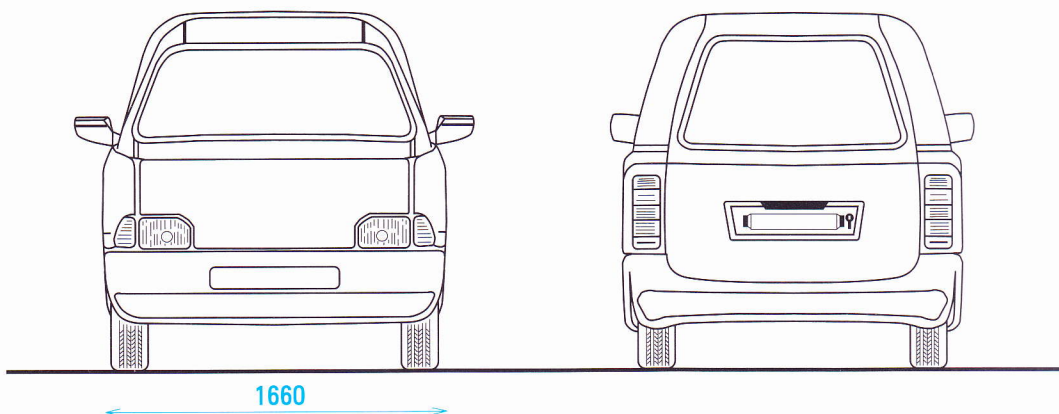
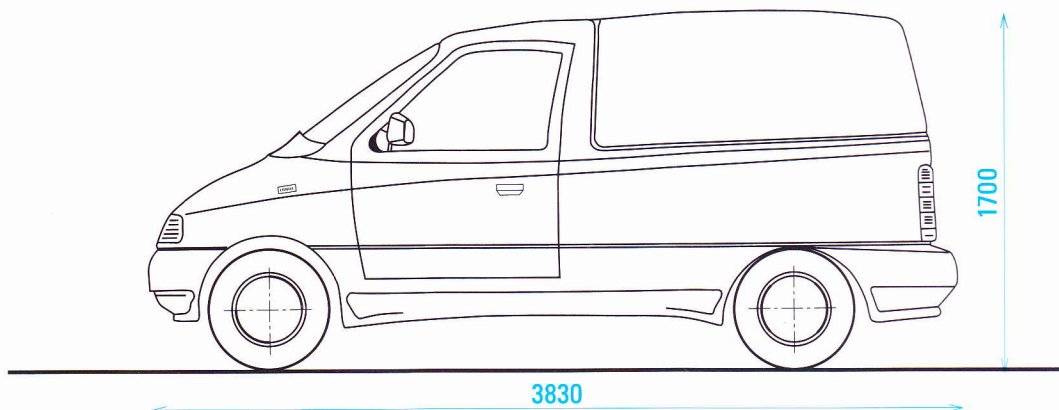
MONITORING SYSTEM



CLOSE UP VIEW OF ENGINE SPACE

The steel tube frame provides the high level of passengers' safety even in the case of over-roll crash. The front part of the vehicle is equipped with a deformation zone that consists of patented absorbent units which absorb kinetic energy in case of a frontal impact. The body is made of fibreglass. The component parts of body are made of coloured materials which don't require any further painting and are resisting to surface damages. The body is glued on the steel frame





ŠKODA

ŠKODA ELCAR s.r.o.

330 02 Ejovice Dýšina

Czech republic

Tel. ++420 19/945 611, --612--663

Fax ++420 19/945 651